

## Truck/Trailer Date Explanations

In the "service" section of the truck and/or trailer screens, several important dates can be maintained in the Truck and/or Trailer files.

Air Filter ID	<input type="text"/>	Tire Size	<input type="text"/>	Miles	<input type="text"/>	Days	<input type="text"/>
Last A Service Date	<input type="text"/>	Miles	<input type="text"/>	A Service Interval	<input type="text"/>	<input type="text"/>	<input type="text"/>
Last B Service Date	<input type="text"/>	Miles	<input type="text"/>	B Service Interval	<input type="text"/>	<input type="text"/>	<input type="text"/>
Last DOT Inspection Date	<input type="text"/>	Miles	<input type="text"/>	DOT Interval-Days	<input type="text"/>	<input type="text"/>	<input type="text"/>
Last Air Filter Replacement	<input type="text"/>	Miles	<input type="text"/>	Air Filter Interval	<input type="text"/>	<input type="text"/>	<input type="text"/>
Track Maintenance PMs	<input type="checkbox"/>	Shop ID	<input type="text"/>	Maximum Fuel Capacity:	<input type="text"/>		
Minimum Fuel Requirement	<input type="text"/>	Act Fuel	<input type="text"/>				
Truck MPG	<input type="text"/>	Last Change to MPG Date	<input type="text"/>				

Utilizing these dates help to keep you alerted in the call in screens of upcoming due dates. We can also set up a color scheme in the browser using these dates. Ask your Support Team! All of my examples will deal with the Truck screens, but the Trailer screens are very similar.

Your date area might look like this:

Last A Service Date	<input type="text"/>	Miles	<input type="text"/>
Last B Service Date	<input type="text"/>	Miles	<input type="text"/>
Last DOT Inspection Date	<input type="text"/>	Miles	<input type="text"/>
Last Air Filter Replacement	<input type="text"/>	Miles	<input type="text"/>

BUT, this is user definable!

Go to SETUP->System Configuration

User defined Support settings

Here you can change the labels to existing fields.

Also, note the row near the bottom-USER DEFINED FIELDS for Driver-Truck-Trailer. By answering yes to these you can add an entire page of user defined fields to each of those browsers if desired!

\*More info on that to follow\*

User-Defined Support File Label Settings - DPSYSUDSUP

Driver Default Label	User-Defined Label
Terminal	Terminal
Disp	Dispatcher
PR Empl #	PR Empl #
PR Dept	PR Dept
Pager/Alt #	EX Field

Truck Default Label	User-Defined Label
Disp	Dispatcher
Terminal	Terminal
PR Dept	PR Dept
Service A	A Service
Service B	B Service

Trailer Default Label	User-Defined Label
Disp	Dispatcher
Terminal	Terminal
Service A	A Service
Service B	B Service

User-Defined Fields for Driver?  Truck?  Trailer?

Trailer Type Field Length

OK Cancel

Back to the field labels!

Some examples to consider:

Truck Service A	Inspection
Truck Service B	Oil Chg
Trail Service A	
Trail Service B	

Your screen would look like this:

Last Inspection Date	09/01/12	Miles	0
Last Oil Chg Date	12/15/12	Miles	123456
Last DOT Inspection Date	01/07/12	Miles	0

The first step is to fill in the last occurrence as above on the second page of the truck screens. In this example we are using dates for inspection intervals and miles for service intervals.

The next step is to actually fill in the interval information.

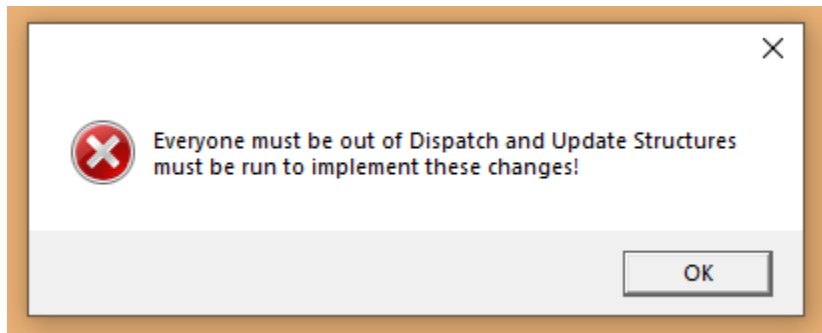
	Miles	Days
Inspection Interval	0	90
Oil Chg Interval	10000	0
DOT Interval-Days		365

Inspections are set to occur every 90 days, the DOT inspection every year and the oil change every 10,000 miles. Once this information is filled in as desired, the call-in screen will “keep you posted” when the next occurrence is due by a color coded system. If a due date is within the next 7 days, the field will turn yellow. If a due date has past, the field will turn red. If the miles due are within 5000 miles, the field will turn from blue to green. If the miles are within 1000 miles the field will turn yellow, and as with the dates, if overdue the field will turn red.

DOT Ins:	16 Days	Next Inspection	-21 Days	Oil	456.0 Miles
----------	---------	-----------------	----------	-----	-------------

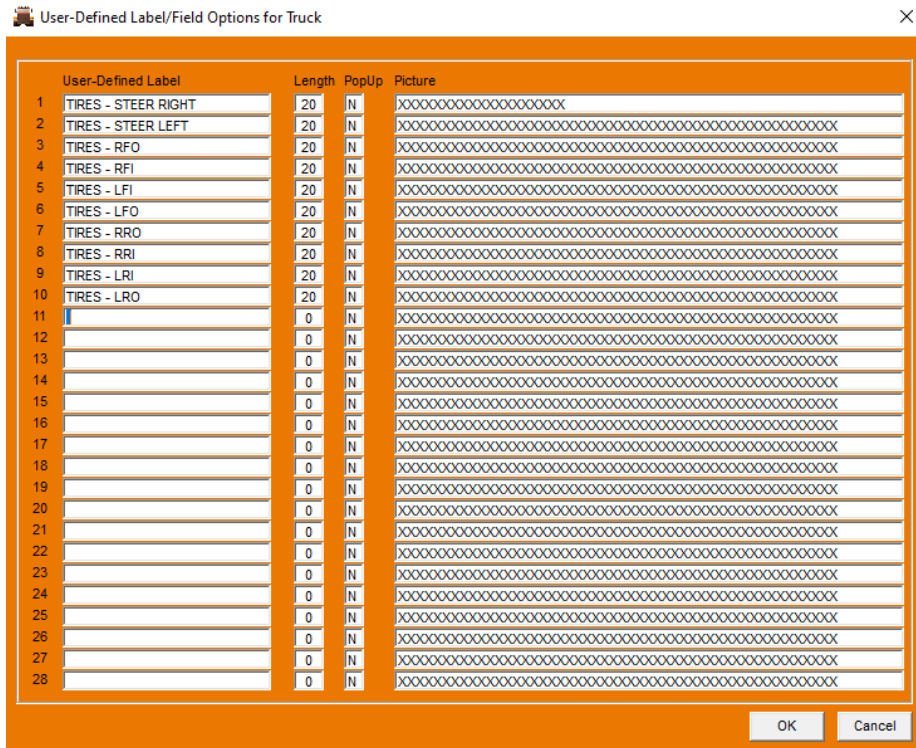
## USER DEFINED FIELDS

As promised here is more information for the user defined pages you can add. After turning on the extra pages by answering Y in each one, you get this popup. You need to get everyone out of dispatch and go to Utilities and Update Structures. This will add the new fields to the databases.

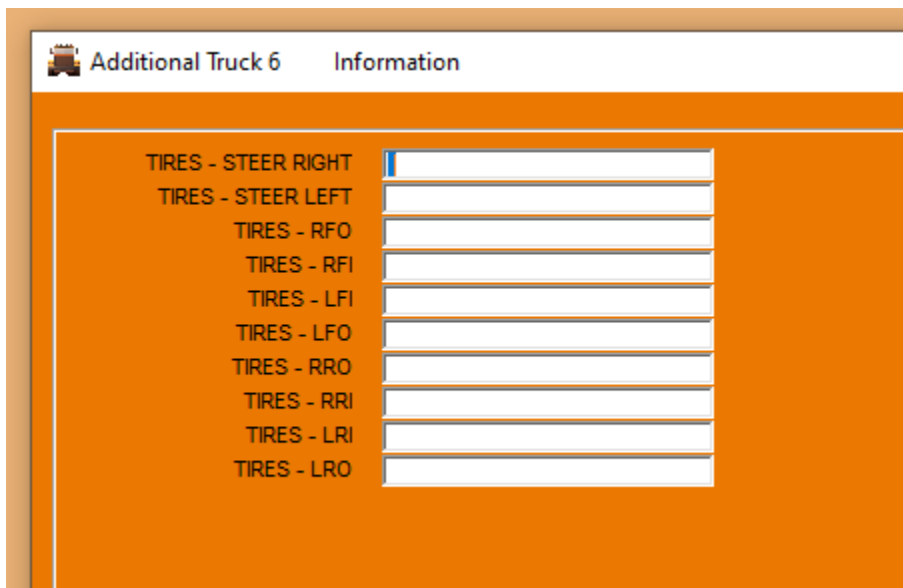


Then you are ready to add your new fields! This is user defined-go crazy-lol

A good example would be tire sizes in the truck and/or trailer screens!



To get your information, go to the browser and hit the user fields button.



I bet you can think of lots of useful ideas for these extra pages!