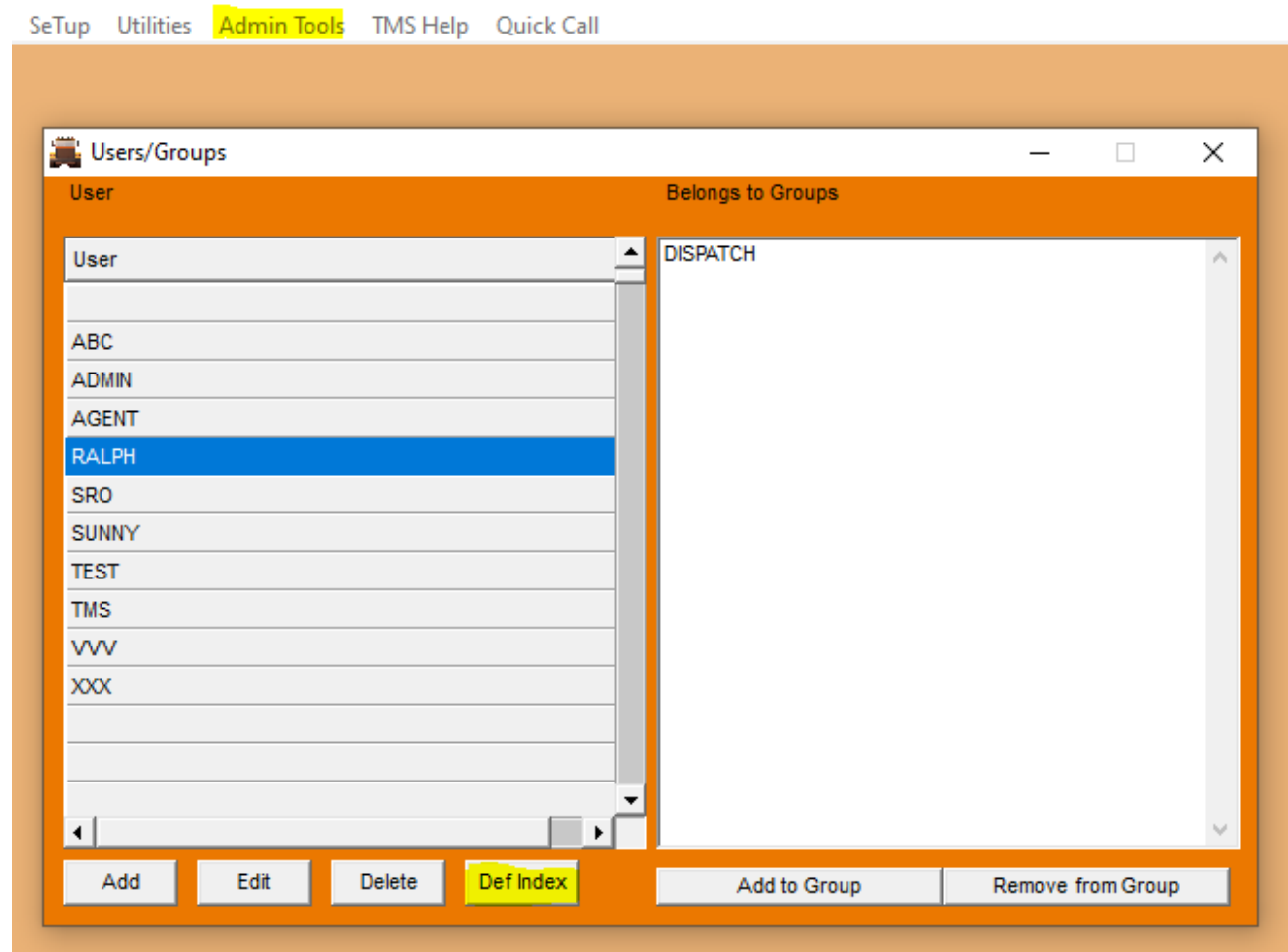


## HOW TO SETUP DEFAULT INDEXES FOR USERS

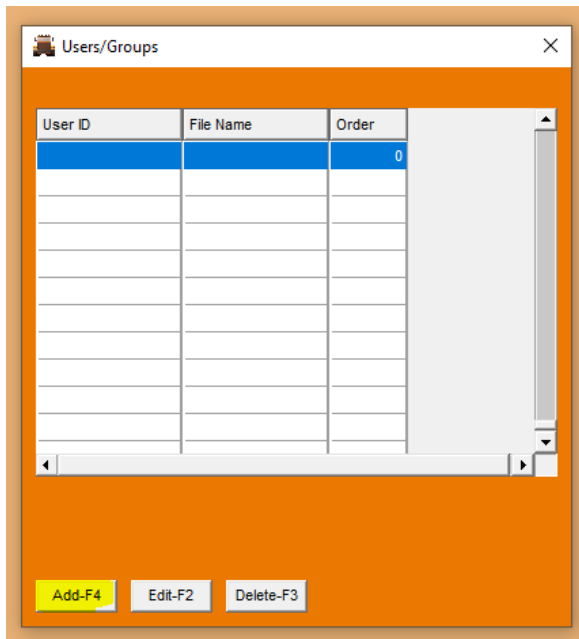
Under the Admin Tools Menu (You must have Access to this menu)

Go to the USER/GROUPS

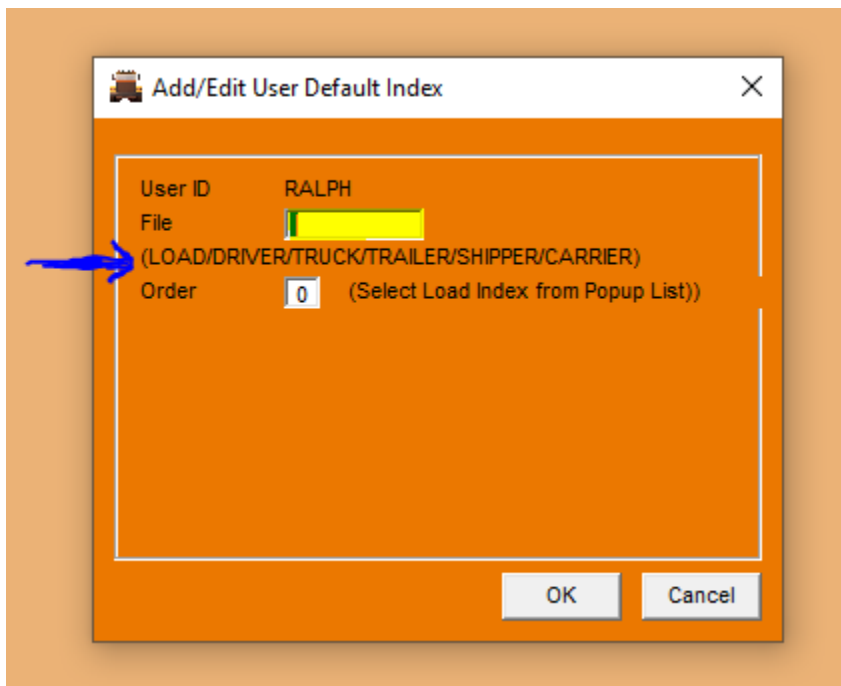
Highlight the user and click on the DEF INDEX button



CLICK ON ADD



Input the file you want to create a default index for (see list to choose from)



In the ORDER box you hit F1 and choose the index from the popup list (if setting LOAD index)\*

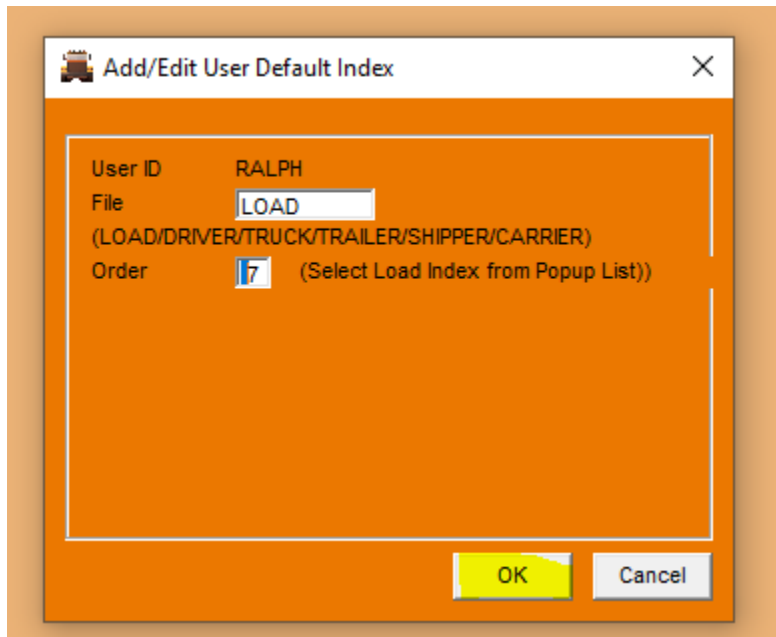
The image shows two overlapping windows. The top window, titled 'Add/Edit User Default Index', has fields for 'User ID' (RALPH), 'File' (LOAD), and 'Order' (0). The bottom window, titled 'User Load File Index Default', contains a table with 8 columns: Index, Index Name, Primary, Secondary, Tertiary, Status, BrokSt, and Billed. Row 19, 'BROKST', is highlighted in blue. A 'Set Default' button is at the bottom.

Index	Index Name	Primary	Secondary	Tertiary	Status	BrokSt	Billed
1	Unbilled Loads - Load Order	LOAD			XADPHEB		N
2	Billed Loads	LOAD			DAPEHB		Y
3	Bill Id+Ship Id+PDate	BILL_ID	SHIP_ID	PDATE	APEHDBX		B
4	Brokered Loads	DISP			B		N
5	Brokered Loads Enroute	CONSST	CONSCITY		B		B
6	Active Loads by Load #	LOAD			AHPE		B
7	Ship Id+PDate	SHIP_ID	PDATE		APEHDBC		B
8	P Date	PDATE			AHX		N
9	Pick Date	PDATE			PEDBH		B
10	Agent	DPLAGENT	DISP		AH	AH	N
11	By Agent and Pickup date	DPLAGENT	PDATE		APECBHD		B
12	Delivered and Unbilled by Agent	DPLAGENT			D		N
13	Bill Id+Ship Id+Cons Id	BILL_ID	SHIP_ID	CONS_ID	APEBXHD		B
14	Loads by Billee PO#	BILLPO			APEBXHD		B
15	Active Loads by Dept	DISP	STATUS	PDATE	APEBXH		N
16	Agent by Load	DPLAGENT	LOAD		APECBXHD		B
17	Carrier then TT	CARRIER	TRAILTYPE	DDATE	APEBHD		B
18	TT then Carrier	TRAILTYPE	CARRIER	DDATE	APEBHD		B
19	BROKST	BROKST					B
20	By ICC code	ICC			APEDHX		B
21	ALL LOADS	LOAD			APECBXHDQN		B
22							
23							

Click the SET DEFAULT button at the bottom, answer YES

A dialog box with a red 'X' icon and the text 'Make BROKST the Default Index?'. It has three buttons: 'Yes', 'No', and 'Cancel'. The 'Yes' button is highlighted in yellow.

Close the index browser screen and click OK and all done!



\*If you want to create a default index for the driver/truck/trailer etc. screens just manual type in the number from the index listing on the corresponding browser, for example .....

