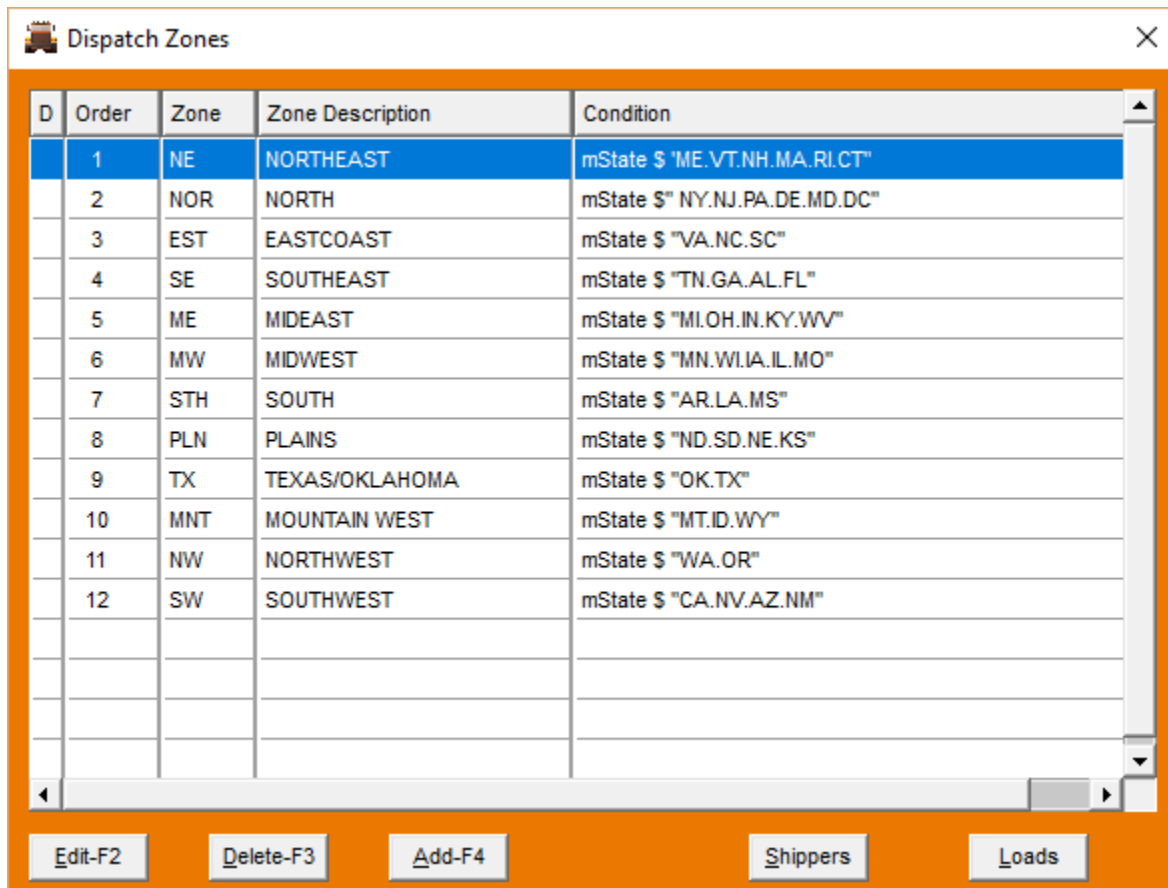


What are Zones?

Zones are a way for you to divide your delivery area into regions in order to make it easier to search for locations, loads, drivers, or equipment. For instance, you might need to sort your available loads by zone to better see what load is the best match fit for a driver heading into a certain region of the country or state. A typical load index to use would be to have Available loads sorted by Zone and Pickup Date. If you have a driver going into the Midwest Zone (for example) and you are trying to decide his next load, just select that index and see what loads are in that zone in the order they need to be picked up. Also, if you have a driver going into Zone where you don't have any available loads, you might want to sort your Shippers by zone to see who you have close that you can contact about getting a load out.

The arrangement of Zones is totally dependent on what you need. If you are a nationwide carrier, you might have the entire US split up into Zones based on the state they are in. If you are a regional carrier, some states might be divided up into several Zones, like a Panhandle Florida, North Florida, and South Florida. If you are only operating in a single state, you might have that state divided up into many Zones. The arrangement and number of Zones depends entirely on what you need.

Here is an example setup:



The screenshot shows a window titled "Dispatch Zones" with a close button (X) in the top right corner. The window contains a table with the following data:

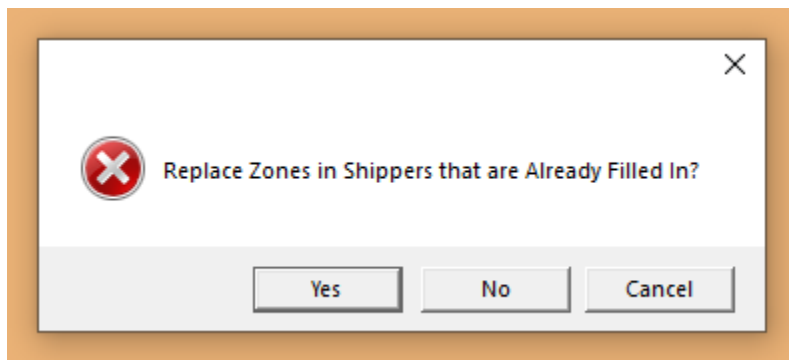
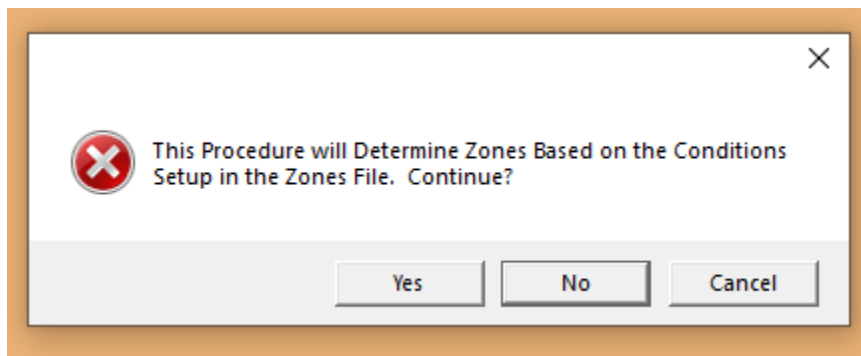
D	Order	Zone	Zone Description	Condition
	1	NE	NORTHEAST	mState \$ "ME.VT.NH.MA.RI.CT"
	2	NOR	NORTH	mState \$" NY.NJ.PA.DE.MD.DC"
	3	EST	EASTCOAST	mState \$ "VA.NC.SC"
	4	SE	SOUTHEAST	mState \$ "TN.GA.AL.FL"
	5	ME	MIDEAST	mState \$ "MI.OH.IN.KY.WV"
	6	MW	MIDWEST	mState \$ "MN.WI.IA.IL.MO"
	7	STH	SOUTH	mState \$ "AR.LA.MS"
	8	PLN	PLAINS	mState \$ "ND.SD.NE.KS"
	9	TX	TEXAS/OKLAHOMA	mState \$ "OK.TX"
	10	MNT	MOUNTAIN WEST	mState \$ "MT.ID.WY"
	11	NW	NORTHWEST	mState \$ "WA.OR"
	12	SW	SOUTHWEST	mState \$ "CA.NV.AZ.NM"

At the bottom of the window, there are five buttons: "Edit-F2", "Delete-F3", "Add-F4", "Shippers", and "Loads".

It might look a little strange and “computer-y”, but we are always here to help you get it setup right. And once it is setup, it is done and you don’t have to mess with it anymore.... Unless you need to fine tune it down the road. For instance, there are cities that sit right on the borders of Zones that perhaps you think of as in a Zone different from what their state would signify. For instance, a company in Kansas City, MO would be in the extreme west of the Midwest zone but maybe you consider it more of a Plains Zone city. We can make the condition select Plains by adding to it. When you enter new shippers in Kansas City, they can automatically get assigned as Plains Zone.

One of the ways we help you make it easy is an auto update function. Once you have a new or edited Zone setup, the Shipper and Load buttons can be used to update your shippers and existing loads with the new Zone assignments. (Always do the Shipper button first)

Here are the pop ups when you use the Shipper button:



Note that it will only replace zones in Shippers that currently have a zone filled in.

Here are the pop ups when you use the LOAD button:

