

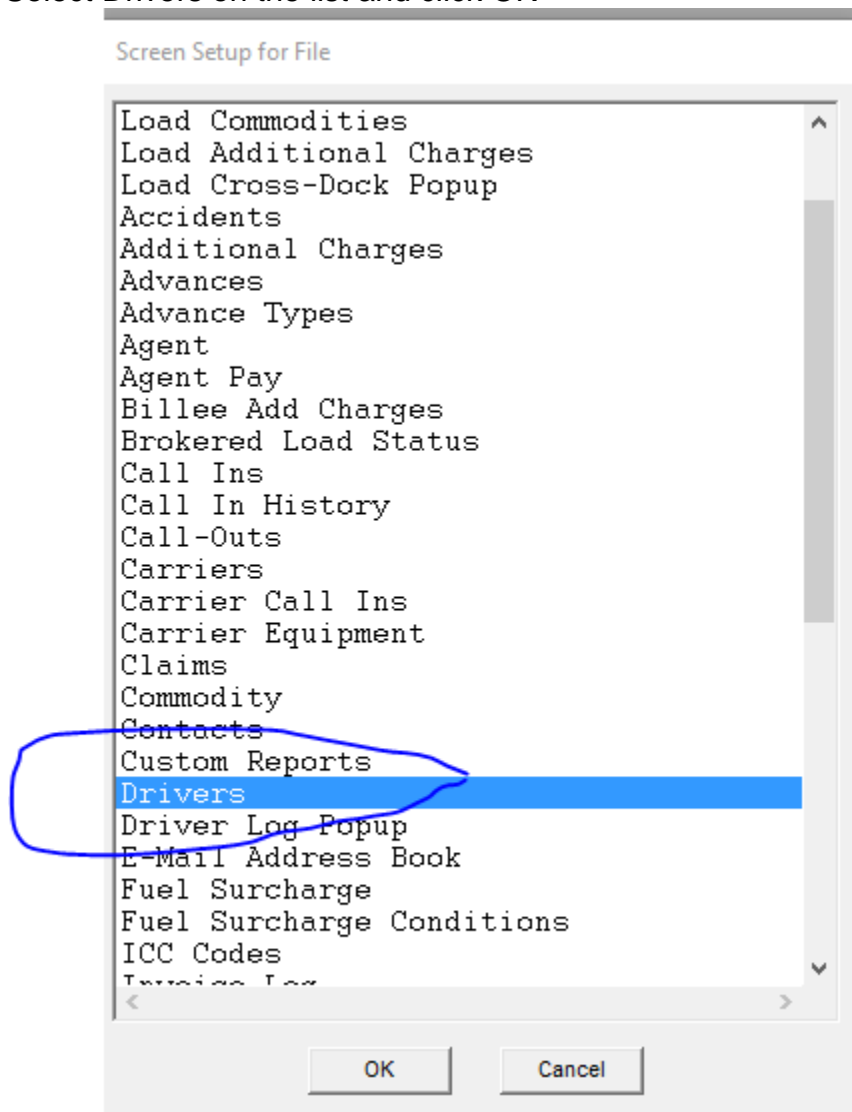
Customize TMS Screens

It is quite easy to customize screens in our TMS modules. You can even set them up to be different views for different users or different groups of users!

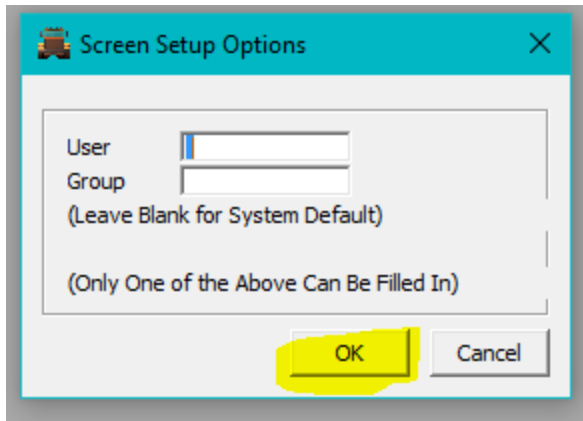
In the example below, we are going to add the loaded mile column to the driver browser screen in Dispatch.

In Dispatch, go to Setup->Screen Setup

Select Drivers on the list and click OK

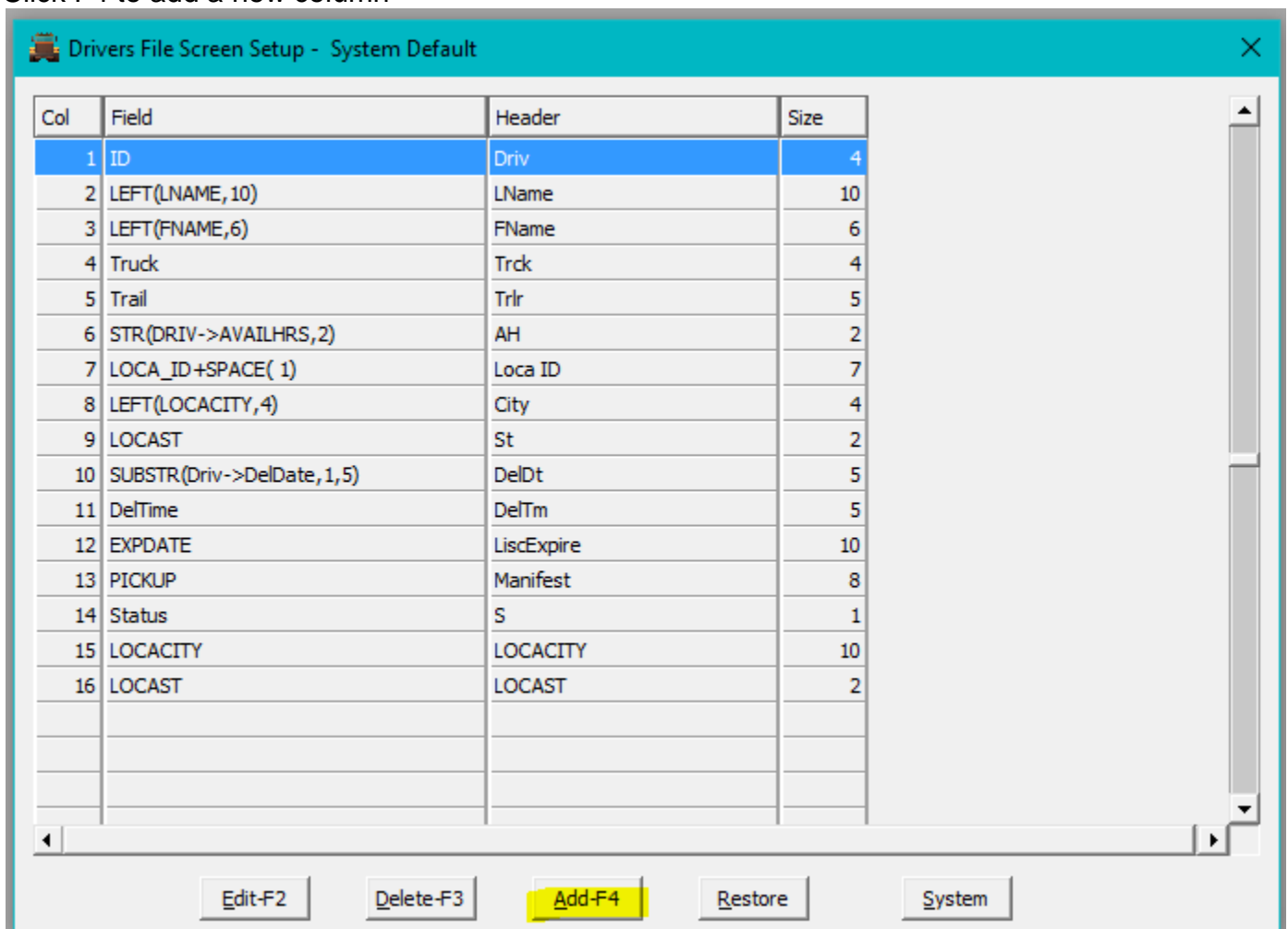


On the next screen that pops up, leave the user and group blank and click OK.

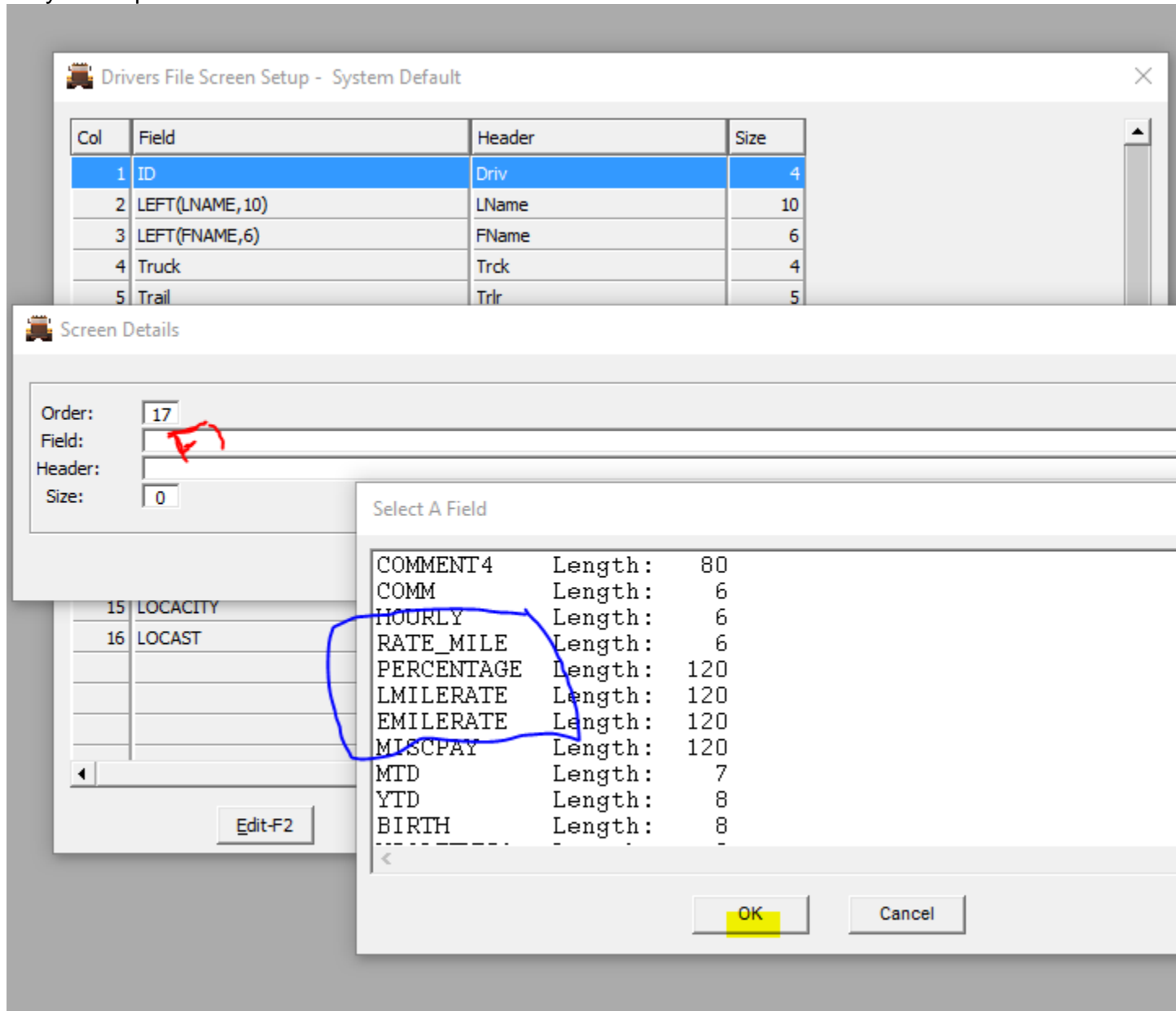


The next screen that pops up is the custom driver screen. It probably doesn't look exactly like the one below, because it is customizable. **But if it is Blank, STOP** and email support and we will help you. Blank means you have the system screen and will need to add all the columns you wish to see.

Click F4 to add a new column



On the next screen that pops up, Press F1 on the field box. That will give you a list of column choices. Arrow down until you see the rate fields. Most of the field names are fairly descriptive



Select the correct pay rate (we are using loaded mile (lmilerate) in our example below) and click OK. You will see this screen with your field. Change the Size from 120 to 10 and click OK.

Screen Details

Order: 17
 Field: LMILERATE
 Header: LMILERATE
 Size: 10

OK Cancel

15	LOCACITY	LOCACITY	10
----	----------	----------	----

You will now see it has added your new field to the list (You may have to scroll up, since it takes you to the bottom). You can hit F4 to add more fields or you can click X to get out. Now when you go back to your driver screen, you will see the new loaded mile column.

Driver File Maintenance

Driv	LName	FName	Trck	Trlr	AH	Loca ID	City	St	DelDt	DelTm	UcdExpire	Manifest	S	LOCACITY	LOCAS	LMILERATE
8940	Ben	Gustav	235	RJD29	70	BOON	BOON	NC	06/22	15:53	11/15/21		A	BOONE	NC	.90
4128	Brown Jr.	John	83		70	118CL	Carb	IL	/	00:00	12/13/21	O- 7-A	P	Carbondale	IL	.90
1	Depper	Johnny	1281		0		OLNE	IL	/	00:00	02/08/19	O- 9-A	P	OLNEY	IL	.89
3522	Harbire	David			70		BURN	IN	/		12/31/17		A	BURNS HARBOR	IN	.95
2256	Hestington	Nehsar	12		70		Empe	VA	03/09	16:44	12/31/21		A	Emporia	VA	.90
7818	Ledelinder	Lee	10	8300	70		BURN	IN			01/01/21		A	BURNS HARBOR	IN	.95

Edit-F2 Index Deadhead Advance Pre-Drop ShowAll Mark-Spc Images
 Add-F4 Search Load Call-In Notes Mail Locaload AddImages UserF8