



DPWIN Help and Manual

© 2011 BJ Exum, Custom Software Solutions, Inc.

Dispatch Help Document DPWIN 32 Transportation Management Software

by BJ Exum, Custom Software Solutions, Inc.

Special Thanks to Sunny Kerr for the help document.

Table of Contents

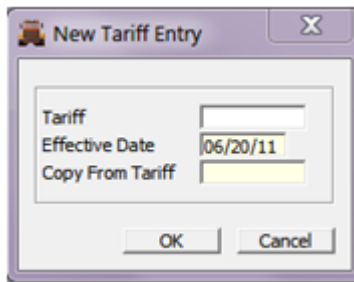
Part I Auto Rating Tariffs File Maintenance	4
--	----------

1 Auto Rating Tariffs File Maintenance

Auto Rating Tariffs

**Note: Autorating is a feature that is included with the Dispatch32 program. The intention of the following is only to inform you of some of the possible ways to use this rating feature. Explaining how to enter every possible tariff combination is beyond the scope of any manual. Training by a qualified individual and/or help from the support staff will get you through that aspect of the program. Some examples will be at the end of this document.*

Tariffs can be setup by going to Setup, Tariff and clicking the <Add New> button.



You can use any six character code, but typically, it makes sense to use the same code as the customer ID that you are setting it up for. Enter your Effective date (the date this tariff rate will go into effect). You have the option to copy an existing tariff (saves a lot of redundant typing). One example for copying a tariff would be the case where a tariff only increases it's rate at a new effective date. Both the old and the new tariffs are identical except for the rate columns. You may even have the same tariff ID name, since the effective dates would make them individual, unique tariffs. If

you choose an existing tariff, the next screen will be populated with the rates you copied from. If not, you will have a blank screen. Hit F4 to add each rate.

The screenshot shows a 'Tariff Add' dialog box with the following fields and values:

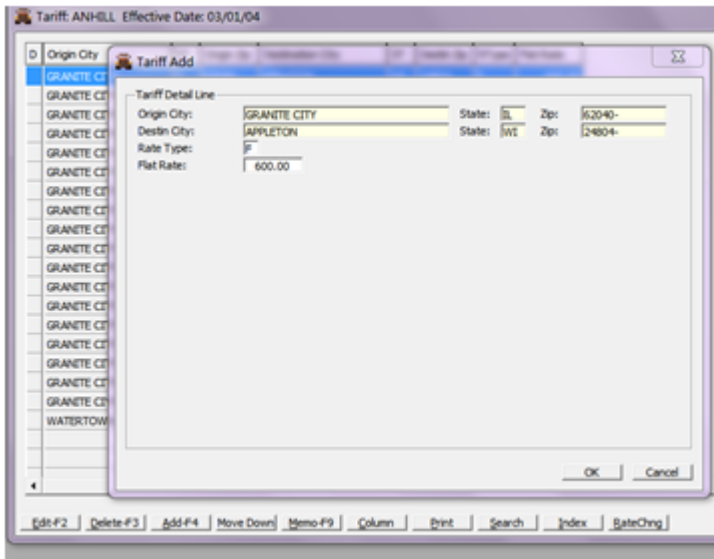
Tariff Detail Line			
Commodity:		State:	
Origin City:		Zip:	-
Destin City:		State:	
Zip:		Zip:	-
Distance:	0		
Rate Type:			
Rate 1:	0.000	Rate 2:	0.000
Min Wt 1:	0	Min Wt 2:	0
Max Wt 1:	0	Max Wt 2:	0
Drop Charge:	0.00		
Minimum Charge:	0.00		
Flat Rate:	0.00		
Extra Charge 1:	0.00	Extra Charge 2:	0.00
Extra Rate 1:	0.000	Extra Rate 2:	0.000
User Function:			
Trailer Type:			
Pay Rate:	0.0000		
Condition:			
Add Charge 1:		Add Charge 2:	
Rate Miles:	0	Note:	

Buttons: OK, Cancel

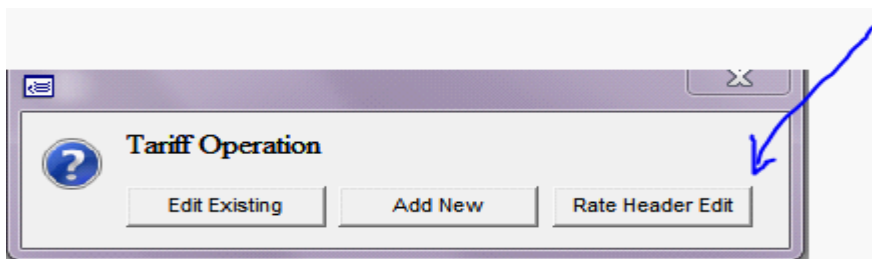
When adding a tariff without using an existing tariff template, every possible field (see example above) will be displayed. Use any of these fields in defining the tariff. Once you save the tariff, the Autorating browser screen will only show the fields that you use. Because of this, Autorating does not have custom screen settings. Any of the cream colored fields (see example above) offer F1 pop up lists to validate your entry.

To Edit an Existing Rate – go to Setup, Tariff and click <Edit Existing>. You can use the <Search> button to help locate a specific tariff. F2 lets you edit the description of the tariff and enter an “Ending” date. To edit the tariff, itself, click <Tariff>. You will then see each rate line. You can press F2 to edit and existing line or F4 to add a new one. You will not see the full

entry screen as in the above example for adding a new tariff. Instead, you will only see the fields that have been used previously.



There will be occasions where you may decide to add a new rate to a tariff that uses different field choices. When you change the format of a rate line, make sure you run the <Rate Header Edit> to update your rate formats.



The following examples are just some of the custom rates you can setup:

Tariff Edit

Tariff Detail Line

Origin City: [] State: PA
Destin City: ABBOTTSTOWN State: PA Zip: []
Rate Type: F
Flat Rate: 275.00
Condition: DPL->ICC = 'T'.AND, MDROPS = 1

\$275.00 Rate from any city in PA to Abbottstown, PA for any load with ICC code of T and at least one drop.

Tariff Edit

Tariff Detail Line

Origin City: DECATUR State: AL Zip: []
Destin City: MILAN State: TN Zip: []
Rate Type: []
Rate 1: 0.970
Min Wt 1: 40000
Minimum Charge: 400.00
Flat Rate: 0.00

.97 per hundred weight for any load going from Decatur, AL to Milan, TN, with a minimum rate of 400.00 for 40000 weight or less.

Tariff Edit

Tariff Detail Line

Origin City: FRANKLIN PK State: IL Zip: []
Destin City: HARLINGEN State: TX Zip: []
Rate Type: F
Rate 1: 0.000
Min Wt 1: 0
Minimum Charge: 0.00
Flat Rate: 2685.00

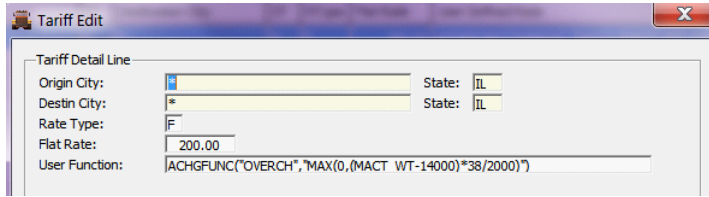
\$2685.00 Flat rate for any load going from Franklin Pk, IL to Harlingen, TX

Tariff Edit

Tariff Detail Line

Origin City: ELKHART State: IN
Destin City: * State: IA
Rate Type: M
Rate 1: 1.580
Minimum Charge: 800.00
User Function: ISTOPCHRG(0,2,0,'TIF(MCOUNT=2,75.IIF(MCOUNT=3,100,125))*',0,99)

\$1.58 a mile, with a \$800.00 minimum charge for any load going from Elkhart, IN to any city in IA. If there are 2 drops, charge extra \$75, 3 drops, \$100, otherwise charge \$125.



The screenshot shows a window titled "Tariff Edit" with a close button (X) in the top right corner. The window contains a "Tariff Detail Line" section with the following fields:

Origin City:	[*]	State:	IL
Destin City:	[*]	State:	IL
Rate Type:	F		
Flat Rate:	200.00		
User Function:	ACHGFUNC("OVERCH",MAX(0,(MACT WT-14000)*38/2000))		

Charge a flat rate of \$200 for any city in IL to any city in IL and put an additional charge called OVERCH that charges \$38 a ton if the load for any weight that is higher than 14000.